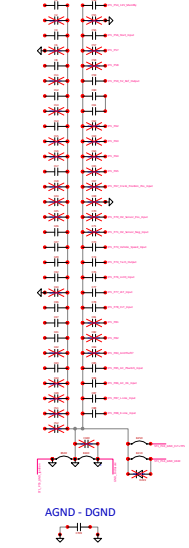
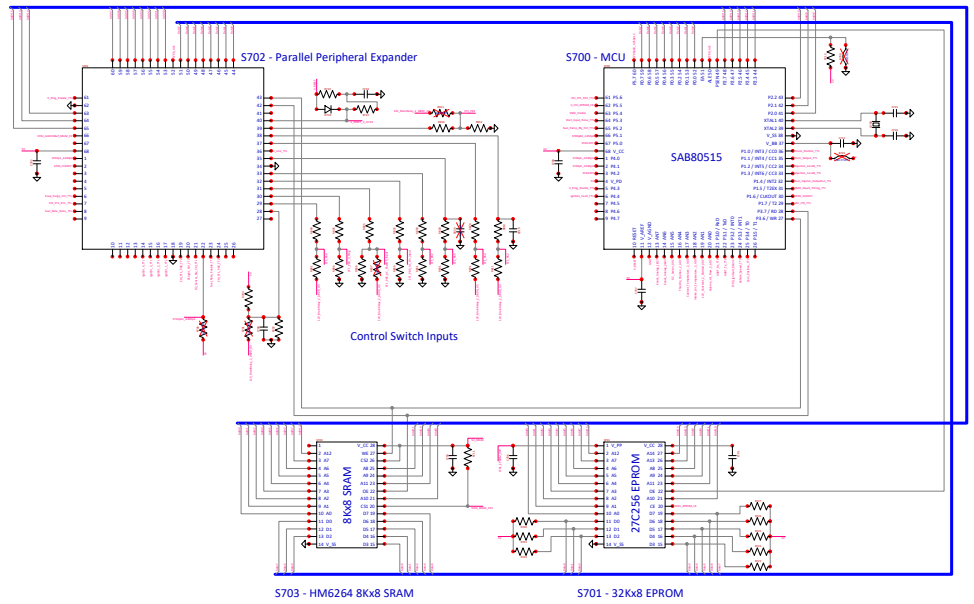
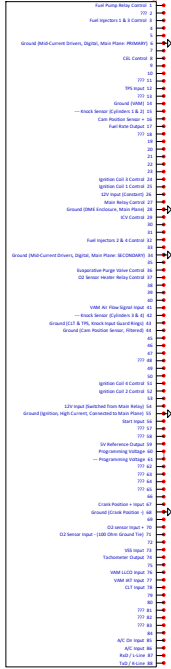


Input Caps and Ground Jumpers



ST1 - Main 88-Pin Connector



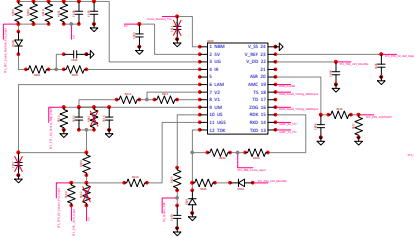
Mainboard DXF



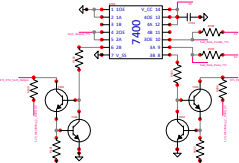
A501 DXF



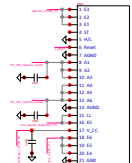
S600 - Crank Position, K-Line, O2 Analog, Vref Out, Various



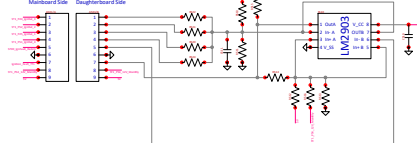
S704 - Tacho & Fuel Rate Output Logic



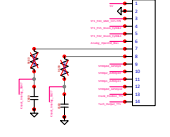
S400 - Fuel Injectors



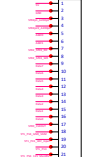
A501 - Ignition Coil Fault Detection



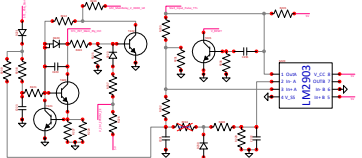
A250 - Knock Subsystem Header?



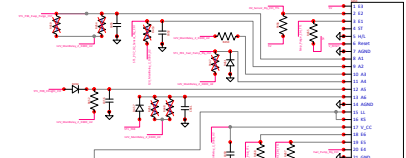
A200 - Debug Header?



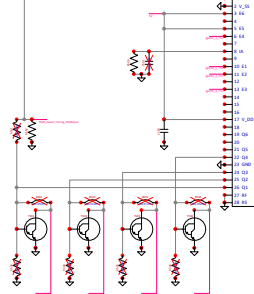
S220 - Start Input & Main Relay Control



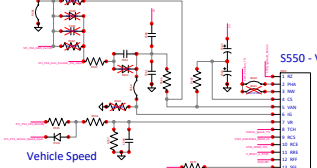
S450 - Evap Valve, O2 Heater Relay, Fuel Pump Relay, CEL, ST1\_P48 Control



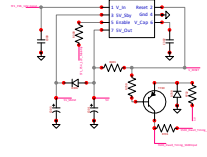
S500 - Ignition Drive



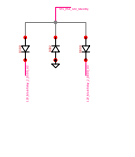
Cam Position



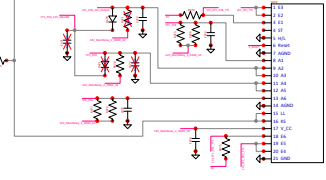
S300 - 5V, 5V-Stby, Reset



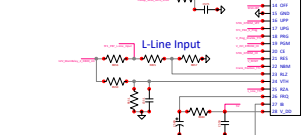
D300 & D800 - 12V U2 & U3



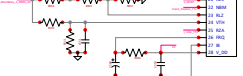
S470 - ST1\_P18, IAC, ST1\_P02, ST1\_P11 Control



Vehicle Speed



L-Line Input



Fuel Pump Relay



S550 - Various

