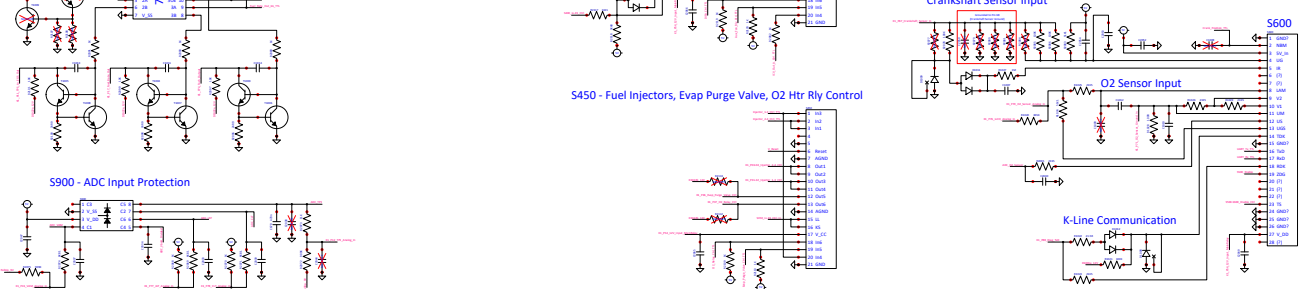
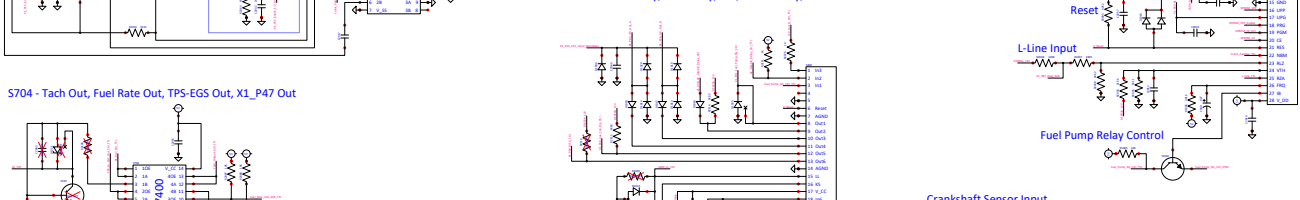
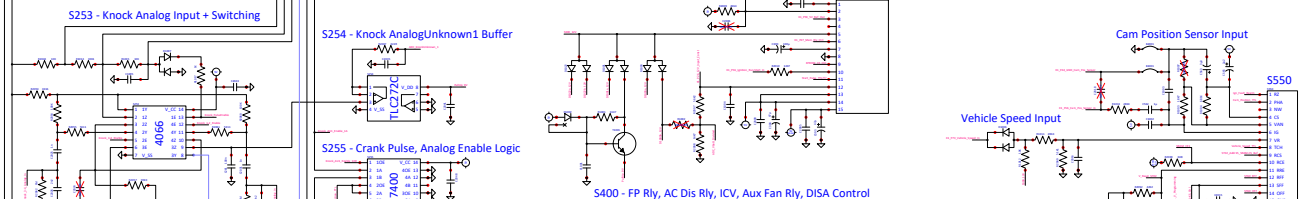
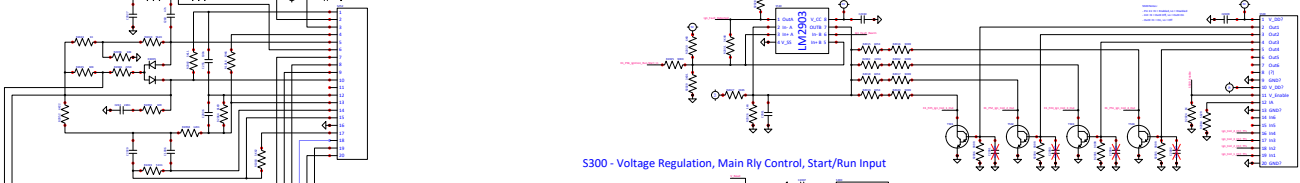
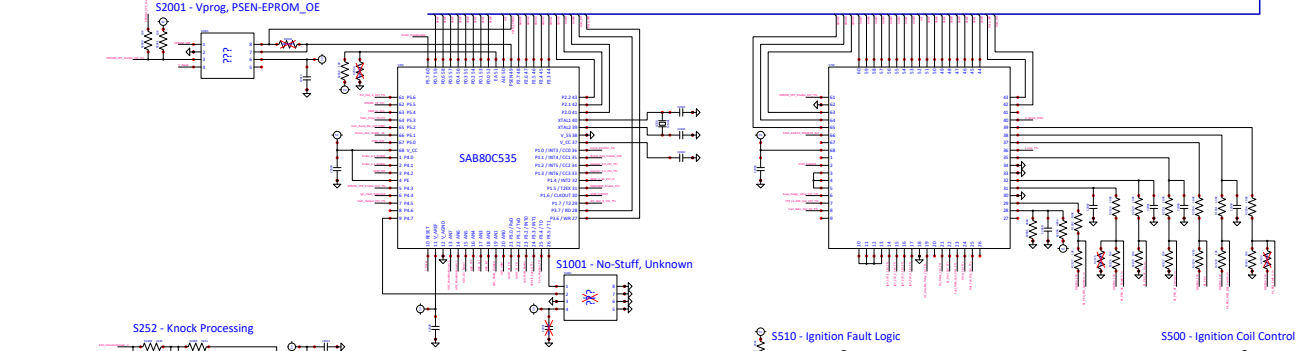
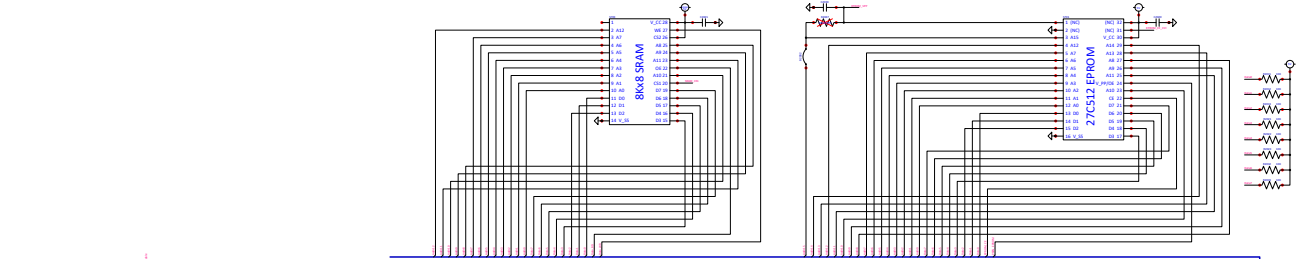
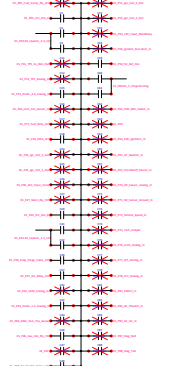


# X1 - Main Input Connector



## X1 Input Capacitors



S2001 - Vprog, PSEN-EPROM\_OE

S252 - Knock Processing

S253 - Knock Analog Input + Switching

S704 - Tach Out, Fuel Rate Out, TPS-EGS Out, X1\_P47 Out

S900 - ADC Input Protection

S1001 - No-Stuff, Unknown

S254 - Knock AnalogUnknown1 Buffer

S255 - Crank Pulse, Analog Enable Logic

S510 - Ignition Fault Logic

S300 - Voltage Regulation, Main Rly Control, Start/Run Input

S400 - FP Rly, AC Dis Rly, ICV, Aux Fan Rly, DISA Control

S450 - Fuel Injectors, Evap Purge Valve, O2 Htr Rly Control

S500 - Ignition Coil Control

Cam Position Sensor Input

S550

Vehicle Speed Input

Reset

L-Line Input

Fuel Pump Relay Control

Crankshaft Sensor Input

O2 Sensor Input

S600

K-Line Communication